

# Yamaha Steinberg USB Driver Installation Guide

## Contents

<b>NOTICE .....</b>	<b>1</b>
<b>What is Yamaha Steinberg USB Driver? .....</b>	<b>1</b>
<b>Installing Yamaha Steinberg USB Driver .....</b>	<b>2</b>
<b>Changing the driver settings.....</b>	<b>4</b>
<b>Uninstalling the Software .....</b>	<b>6</b>
<b>Troubleshooting .....</b>	<b>7</b>

## NOTICE

- This software and Installation Guide are the exclusive copyrights of Yamaha Corporation.
- Copying of the software or reproduction of this Installation Guide in whole or in part by any means is expressly forbidden without the written consent of the manufacturer.
- Steinberg/Yamaha makes no representations or warranties with regard to the use of the software and documentation and cannot be held responsible for the results of the use of this Installation Guide and the software.
- The screen displays as illustrated in this manual are for instructional purposes, and may appear somewhat different from the screens which appear on your computer.
- Steinberg and Cubase are the registered trademarks of Steinberg Media Technologies GmbH.
- Windows is the registered trademark of Microsoft® Corporation.
- Apple, Mac and Macintosh are trademarks of Apple Inc., registered in the U.S. and other countries.
- The company names and product names in this manual are the trademarks or registered trademarks of their respective companies.
- Copying of the commercially available musical data including but not limited to MIDI data and/or audio data is strictly prohibited except for your personal use.

## What is Yamaha Steinberg USB Driver?

The Yamaha Steinberg USB Driver enables communication between a USB device (which is compatible with the Yamaha Steinberg USB Driver) and your computer.

# Installing Yamaha Steinberg USB Driver

## NOTE

- You are only permitted to use this software pursuant to the terms and conditions of the “License Agreement” shown during the installation.
- If the same software components have already been installed in your computer, you can use the same procedure as described in the installation instructions here to update the software.

## Windows

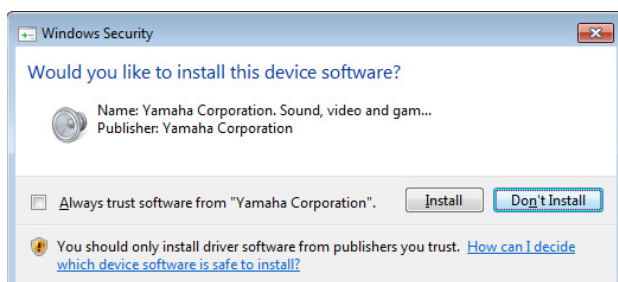
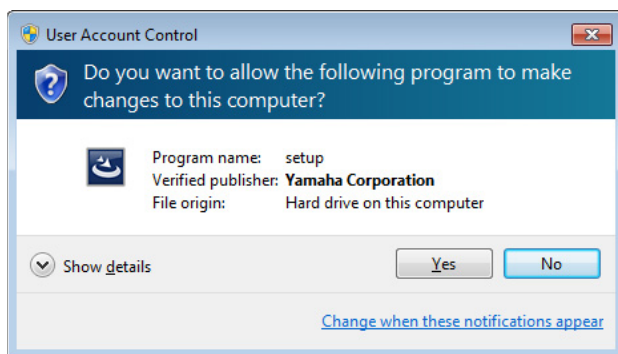
### Preparation

If the following warning messages appear during the installation, click [Continue Anyway], [Yes], or [Install].

Example of warning message on Windows XP



Examples of warning message on Windows Vista/Windows 7



### Installation

- 1 Turn off the computer.**
- 2 Disconnect all USB devices other than the mouse and keyboard from the computer.**
- 3 Start the computer and log on to the Administrator account.**
- 4 Double-click “setup.exe” in the compressed file you have downloaded.**
- 5 Follow the on-screen instructions to install the software.**
- 6 When installation has been completed, click [Finish].**  
If a window requiring you to restart your computer appears, follow the on-screen instructions and restart the computer.

### Device Connection

- 7 Connect the device directly to the computer by using a USB cable.**  
Make sure to not connect it to a USB hub.
- 8 Turn on the device (if it has a power switch).**  
**Windows XP**  
The “Found New Hardware Wizard” window appears. Go on to step 9.  
**Windows Vista/Windows 7**  
Go on to step 12.
- 9 If the “Can Windows connect to Windows Update to search for software?” message appears in the middle of the window, select “No, not this time” then click [Next].**
- 10 Confirm that “Install the software automatically” has been selected, then click [Next].**
- 11 When installation has been completed, click [Finish].**

## Confirmation of Installation

---

### 12 Open the “Device Manager” window as follows.

#### Windows XP

Click [Start] → [Control Panel] → ([Performance and Maintenance]) → [System] → [Hardware] tab → [Device Manager]

#### Windows Vista/Windows 7

Click [Start] → [Control Panel] → ([Hardware and Sound]) → [Device Manager]

### 13 Click on the [+] mark or [>] mark next to “Sound, video and game controllers.”

### 14 Confirm that the device name you are using is listed.

Installation of the Yamaha Steinberg USB Driver is now completed.

## Mac

---

### Installation

---

- 1** Turn off the computer.
- 2** Disconnect all USB devices other than the mouse and keyboard from the computer.
- 3** Start the computer and log in to the Administrator account.
- 4** Double-click “Yamaha Steinberg USB Driver.mpkg.” in the compressed file you have downloaded.
- 5** Follow the on-screen instructions to install the software.
- 6** When installation has been completed, click [Restart] to restart the computer.

### Device Connection

---

- 7** Connect the device directly to the computer by using a USB cable.  
Make sure to not connect it to a USB hub.
- 8** Turn on the device (if it has a power switch).

### Confirmation of Installation

---

- 9** Open the “Audio MIDI Setup” window as follows.  
Click [Macintosh HD] → [Applications] → [Utilities] → [Audio MIDI Setup]
- 10** Confirm that the device name you are using is listed in the following.  
**Mac OS X 10.5**  
In the “Properties For:”  
**Mac OS X 10.6**  
In the left column

Installation of the Yamaha Steinberg USB Driver is now completed.

# Changing the driver settings

## Windows

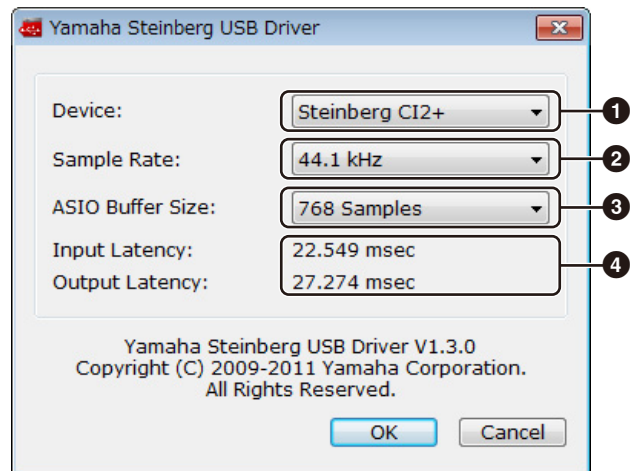
You can change the driver settings from the control panel of the driver.

### Opening the control panel of the driver

Use one of the following methods to open the control panel of the driver.

- Select [Start] → [Control Panel] → [Hardware and Sound (or [Sounds, Speech, and Audio Devices])] then click [Yamaha Steinberg USB Driver]
- If you are using Cubase series 5.1 or later, from the Device field on the Device Setup window (called up via [Device] → [Device Setup...]) of Cubase, select “Yamaha Steinberg USB ASIO,” then click “Control Panel.”

### Control panel of the driver



#### ① Device

Select the device using ASIO driver. This function is available when two or more devices compatible with Yamaha Steinberg USB Driver are connected to a computer.

#### ② Sample Rate

Specifies the sample rate of the device compatible with Yamaha Steinberg USB Driver.

#### ③ ASIO Buffer Size

Determines the buffer size for the ASIO driver.

#### ④ Input Latency / Output Latency

Indicates the delay time for the audio input/output in millisecond units. Audio latency differs depending on the value of the ASIO Buffer Size. The lower the value of the ASIO Buffer Size, the lower the value of Audio Latency.

## Mac OS X

---

The driver settings can usually be adjusted via the audio driver setup window in the application. This section describes how to change the driver settings, using Cubase as an example.

### Changing the sample rate (in Cubase)

---

Open the "Project Setup" window (called up via [Project] → [Project Setup]), then change the "Sample Rate" in the displayed window.

### Changing the buffer size (in Cubase)

---

From the Device field on the Device Setup window (called up via [Device] → [Device Setup...]), select "(device name)" then click "Control Panel." Change the "Buffer Size" in the displayed window.

#### **TIP**

##### **Setting the audio driver buffer size**

Noise produced when using audio applications such as DAW software may affect audio recording and/or playback. In most cases, you can solve these problems by adjusting the audio driver buffer size (the size of memory used to temporarily hold data to avoid intermittent playback). While the higher buffer size reduces load to the computer CPU but produces latency (time lag) during recording/playback, the smaller buffer size may result in noise or the sound cutting off. Make sure to set the buffer size to an appropriate value depending on the performance of your computer, the number of audio/MIDI tracks being recorded/played back on the DAW software, the number of plug-in software, and so on.

# Uninstalling the Software

## Windows

- 1 Disconnect all other USB devices except mouse and keyboard from the computer.**
- 2 Log on to the Administrator account.**  
Exit any open applications and close all open windows.
- 3 Open the window for the uninstall operation as follows.**  
(Windows Vista / Windows 7)  
From the Start menu, select [Control Panel]  
→ [Uninstall a Program] to call up the "Uninstall or change a program" panel.  
  
(Windows XP)  
From the Start menu, select ([Settings] → ) [Control Panel] → [Add or Remove Programs] to display the Add or Remove Programs panel. Click "Change or Remove Programs" located in the upper left.
- 4 Select "Yamaha Steinberg USB Driver" from the list.**
- 5 Uninstall them as follows.**  
(Windows Vista / Windows 7)  
Click the [Uninstall] / [Uninstall / Change].  
If the "User Account Control" window appears, click [Continue] or [Yes].  
Follow the on-screen instructions to remove the software.  
  
(Windows XP)  
Click [Change / Remove] / [Remove].  
Follow the on-screen instructions to remove the software.

## Mac OS X

Remove the following folders and files from the boot disk (usually Macintosh HD).

```
/System/Library/Extensions
    YamahaSteinbergUSBAudio.kext
/Application/Yamaha/USBDriver/
    Yamaha Steinberg USB Control Panel.app
/Library/PreferencePanes/
    Yamaha Steinberg USB.prefPane
/Library/Preferences/
    com.yamaha.YamahaSteinbergUSBDriver.plist
/Library/Audio/MIDI Drivers/
    YamahaSteinbergUSBMIDI.plugin
/Library/Audio/MIDI Devices/Yamaha/Images/
    USB_1500.tiff
    USB_1502.tiff
    USB_1503.tiff
/Library/Receipts/
    YamahaSteinbergUSBAudioDriver.pkg
    YamahaSteinbergUSBControlPanel.pkg
    YamahaSteinbergUSBDriverplist.pkg
    YamahaSteinbergUSBMIDIPlugIn.pkg
    YamahaSteinbergUSBMIDIIcon.pkg
    YamahaSteinbergUSBPrefPane.pkg
```

# Troubleshooting

## No sound.

---

- **Are your speaker cables connected properly?**
- **Are your speaker cables shorted?**
- **Are the volume controls of your sources, audio devices, applications software, computer operating system, etc., set at appropriate levels?**
- **(Windows only) Is the output of your computer operating system muted?**
- **Do you have several applications running at the same time?**  
Be sure to quit all applications you are not using.

## Noise occurs, or the sound is intermittent or distorted.

---

- **Does your computer satisfy the system requirements?**  
Refer to "System Requirements for software" in the included Release Notes.
- **Is the buffer size setting of the Yamaha Steinberg USB Driver set properly?**  
Refer to the "Changing the driver settings" on page 4.
- **Are any other applications, device drivers, or USB devices (scanners, printers, etc.) running at the same time?**  
Be sure to quit all applications you are not using.
- **Are you playing back a large number of audio tracks?**  
The number of tracks you can play at the same time will depend on the performance of the computer you are using. You may experience intermittent playback if you exceed your computer's capabilities.
- **Are you recording or playing long continuous sections of audio?**  
The audio data processing capabilities of your computer will depend on a number of factors including CPU speed and access to external devices.
- **Is the network adaptor running?**  
Disable the suspected network adaptor. Some network adaptors can cause noise.